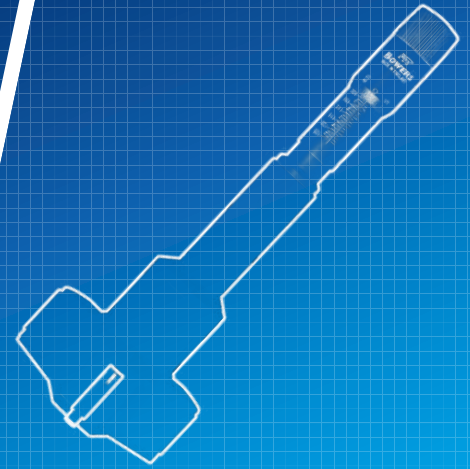
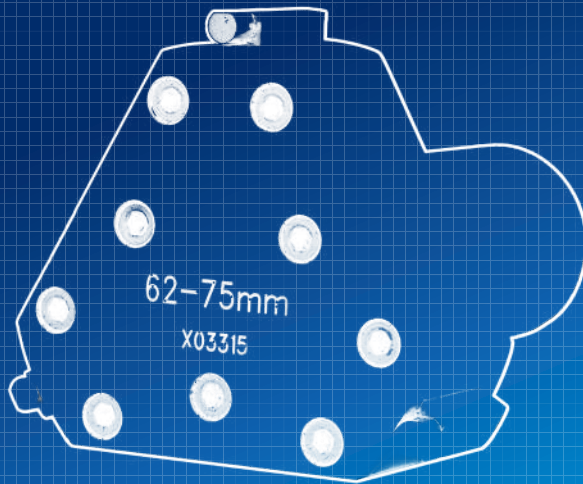




**BOWERS GROUP**

*PARTNERS IN PRECISION*



## ***MT ANALOGUE BORE GAUGE***



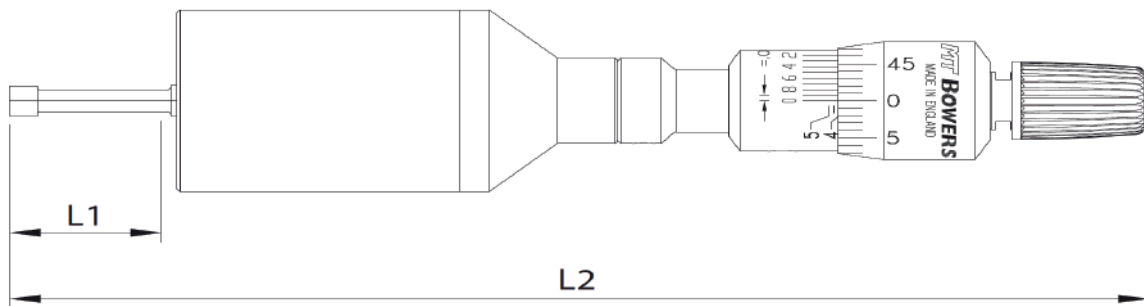
# MT ANALOGUE BORE GAUGE

Bowers MT Analogue Bore Gauges are an economical solution to accurate shop floor bore measurement with a wide application range of 2-6mm (2-point) and 6-300mm (3-point). Sets are supplied with UKAS certified setting rings and individual units supplied without a ring, which is an available option.

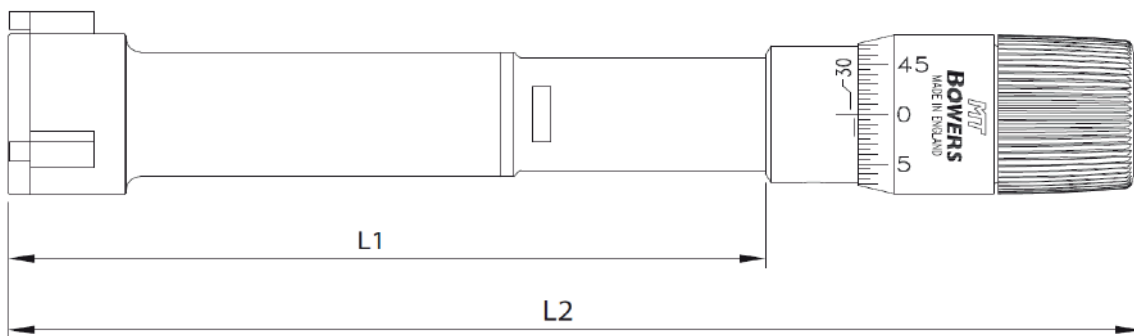
## Features

- Range 2-300mm
- 2-6mm 2 point / 6-300mm 3 point measurement
- Manufactured in the UK to Bowers' very high quality standards
- Precision lapped tungsten carbide measurement anvils for maximum durability
- Blind bore measurement between 2-6mm and 12-300mm

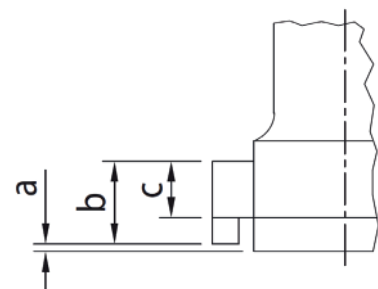
**2-6mm**



**6-200mm**



Range (mm)	a (mm)	b(mm)	c(mm)	L1	L2
2-3	-	-	2.5	9	119.5-120
3-4	-	-	3.2	12	122-123
4-6	-	-	3.2	18	128-129
6-12	2 or less	-	3	60	110-112
12-16	0.3 or less	6.4	4.6	82	128-132
16-20	0.3 or less	8.4	5.5	82	128-132
20-30	0.3 or less	11.5	8.7	102	152-157
30-50	0.3 or less	13	10	102	150-160
50-100	0.3 or less	19	15	111	161-174
100-300	0.3 or less	29.4	25	161	225-250



## MTA: Individual Instruments Supplied with Inspection Certificate

### INDIVIDUAL SETS

Code (without rings)	Range (mm)	Measurement Points	Graduation	Accuracy
MTA1W	2-2.5	2-point	0.001mm	±2µm
MTA2W	2.5-3	2-point	0.001mm	±2µm
MTA3W	3-4	2-point	0.001mm	±2µm
MTA4W	4-5	2-point	0.001mm	±2µm
MTA5W	5-6	2-point	0.001mm	±2µm
MTA6W	6-8	3-point	0.001mm	±2µm
MTA8W	8-10	3-point	0.001mm	±2µm
MTA10W	10-12	3-point	0.001mm	±2µm
MTA12W	12-16	3-point	0.005mm	±2µm
MTA16W	16-20	3-point	0.005mm	±2µm
MTA20W	20-25	3-point	0.005mm	±3µm
MTA25W	25-30	3-point	0.005mm	±3µm
MTA30W	30-40	3-point	0.005mm	±3µm
MTA40W	40-50	3-point	0.005mm	±3µm
MTA50W	50-63	3-point	0.005mm	±3µm
MTA62W	62-75	3-point	0.005mm	±3µm
MTA75W	75-88	3-point	0.005mm	±3µm
MTA87W	87-100	3-point	0.005mm	±3µm
MTA100W	100-125	3-point	0.005mm	±5µm
MTA125W	125-150	3-point	0.005mm	±5µm
MTA150W	150-175	3-point	0.005mm	±5µm
MTA175W	175-200	3-point	0.005mm	±5µm
MTA200W	200-225	3-point	0.005mm	±5µm
MTA225W	225-250	3-point	0.005mm	±5µm
MTA250W	250-275	3-point	0.005mm	±5µm
MTA275W	275-300	3-point	0.005mm	±5µm

### SETTING RINGS

Code	Size (mm)
XTR3M	2.5mm
XTR4M	4mm
XTR5M	5mm
XTR8M	8mm
MTR10M	10mm
MTR16M	16mm
MTR25M	25mm
MTR40M	40mm
MTR62M	62mm
MTR87M	87mm
XTR125M	125mm
XTR175M	175mm
XTR225M	225mm

**MTA SETTING RINGS:  
Supplied with UKAS  
Calibration Certificates**



SMTA5M

### FULL SETS (ALL COMPLETE WITH SETTING RINGS & UKAS CERTIFICATES)

Code	Range (mm)	Measurement Points	Extension	Setting Ring
SMTA1M	2-3	2-point	-	2.5mm
SMTA2M	3-6	2-point	-	4mm, 5mm
SMTA3M	6-12	3-point	100mm	8mm, 10mm
SMTA4M	12-20	3-point	150mm	16mm
SMTA5M	20-50	3-point	150mm	25mm, 40mm
SMTA6M	50-100	3-point	150mm	62mm, 87mm
SMTA7M	100-200	3-point	150mm	125mm, 175mm



**BOWERS GROUP**

Distributed by :  
**Baker Gauges India Pvt. Ltd.**  
37-40, Nagar Road,  
Pune - 411 014. India.

**Tel:** 020 - 66250600  
**Fax:** 020 - 66250786

**Email:** [bakerhip@bakergauges.com](mailto:bakerhip@bakergauges.com)  
**Website:** [www.bakergauges.com](http://www.bakergauges.com)