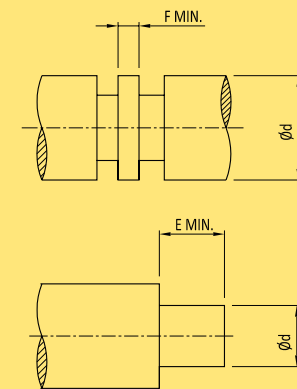
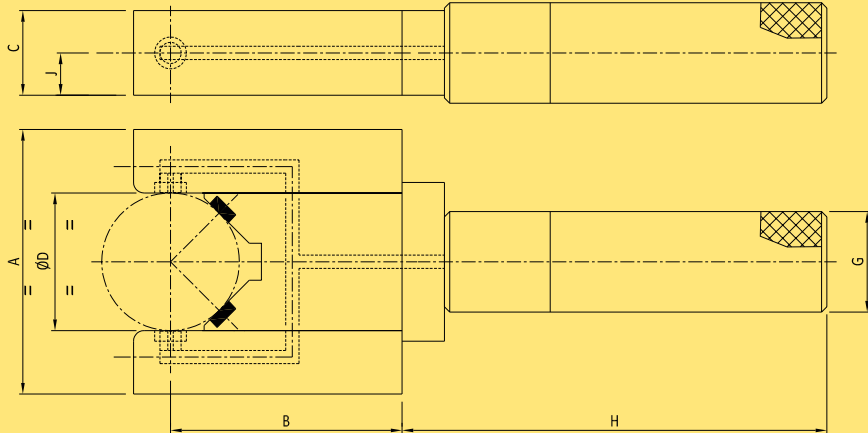


Air Caliper & Setting Discs



AIR CALIPER DATA SHEET



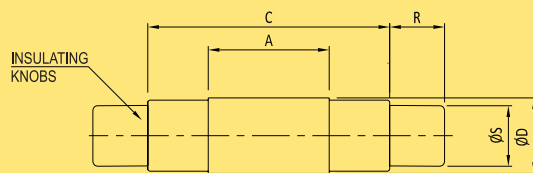
Ø D mm	A	B	C	J		H	Ø G	E (OFFSET) MOD 1A/ CL	F (CENTRAL) MOD 1A/ CL	MIN RANGE	MAX RANGE
				CENTRAL	OFFSET						
10.0-16.0	D+34	54	12	6.0	4.0	100	18.0	6.5/5.5	4.5/3.5	±0.005	80% OF SCALE
16.0-26.0	D+24	54	12	6.0							
26.0-50.0	D+24	60	16	8.0							
50.0-75.0	D+28	75	18	9.0		150	25.5	6.5/5.5	4.5/3.5	±0.010	
75.0-100.0	D+32	80	20	10.0							
#100.0-125.0	D+32	100	20	10.0							
#125.0-150.0	D+40	105	20	10.0							
#150.0-225.0	D+40	155	20	10.0							

- Air calipers are supplied hand held as standard
- # not supplied for use on ± 0.025 mm ClearLine unit

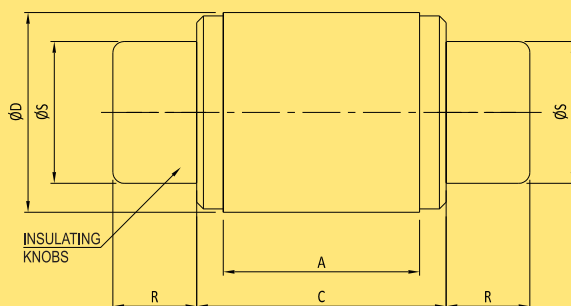
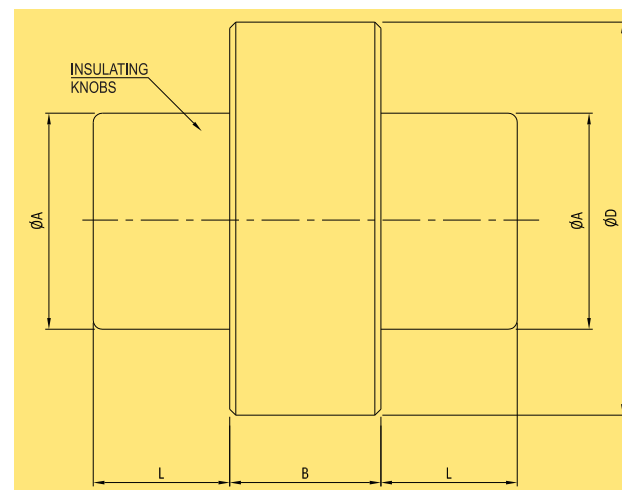
General notes

- Air calipers for 0.0005 mm least count are given up to Ø 50 mm only
- Each air caliper requires two setting masters to set the air caliper on the read-out unit. The difference between the high and low setting masters supplied, covers the component tolerance or the maximum range mentioned in the above table, whichever is lower
- The minimum gauging land "E" and "F" mentioned above is excluding chamfer distance and fillet radius
- For special blind shafts (super blind- 'E' less than mentioned in the above chart) or any other special requirement (multi jet design air caliper), please send the component drawing and ask for a quote

SETTING DISC DATA SHEET



ØD		A	C	R	S
ABOVE	UPTO & INCLUDING				
2.4	3.81	9.52	17.46	11.1	2.4
3.81	5.84	11.11	19.05	11.1	3.2
5.84	9.27	12.7	20.64	11.1	5.6



ØD		A	C	R	S
ABOVE	UPTO & INCLUDING				
9.27	12.95	14.29	22.22	12.7	8.7
12.95	20.96	15.88	23.81	12.7	12.7
20.96	28.83	17.46	25.4	15.9	19
28.83	38.35	20.64	28.58	15.9	25.4

ØD		B	ØA	L
ABOVE	UPTO & INCLUDING			
38.35	51.05	22.2	31.8	15.8
51.05	63.75	22.2	31.8	15.8
63.75	76.45	25.4	38.1	39.8
76.45	89.15	25.4	38.1	39.8
89.15	101.85	25.4	38.1	39.8
101.85	114.55	25.4	38.1	39.8
114.55	127.25	25.4	38.1	39.8
127.25	139.95	25.4	38.1	39.8
139.95	152.65	25.4	38.1	39.8
152.65	165.35	25.4	38.1	39.8
165.35	178.05	25.4	38.1	39.8
178.05	190.75	25.4	38.1	39.8
190.75	225.00	25.4	38.1	39.8